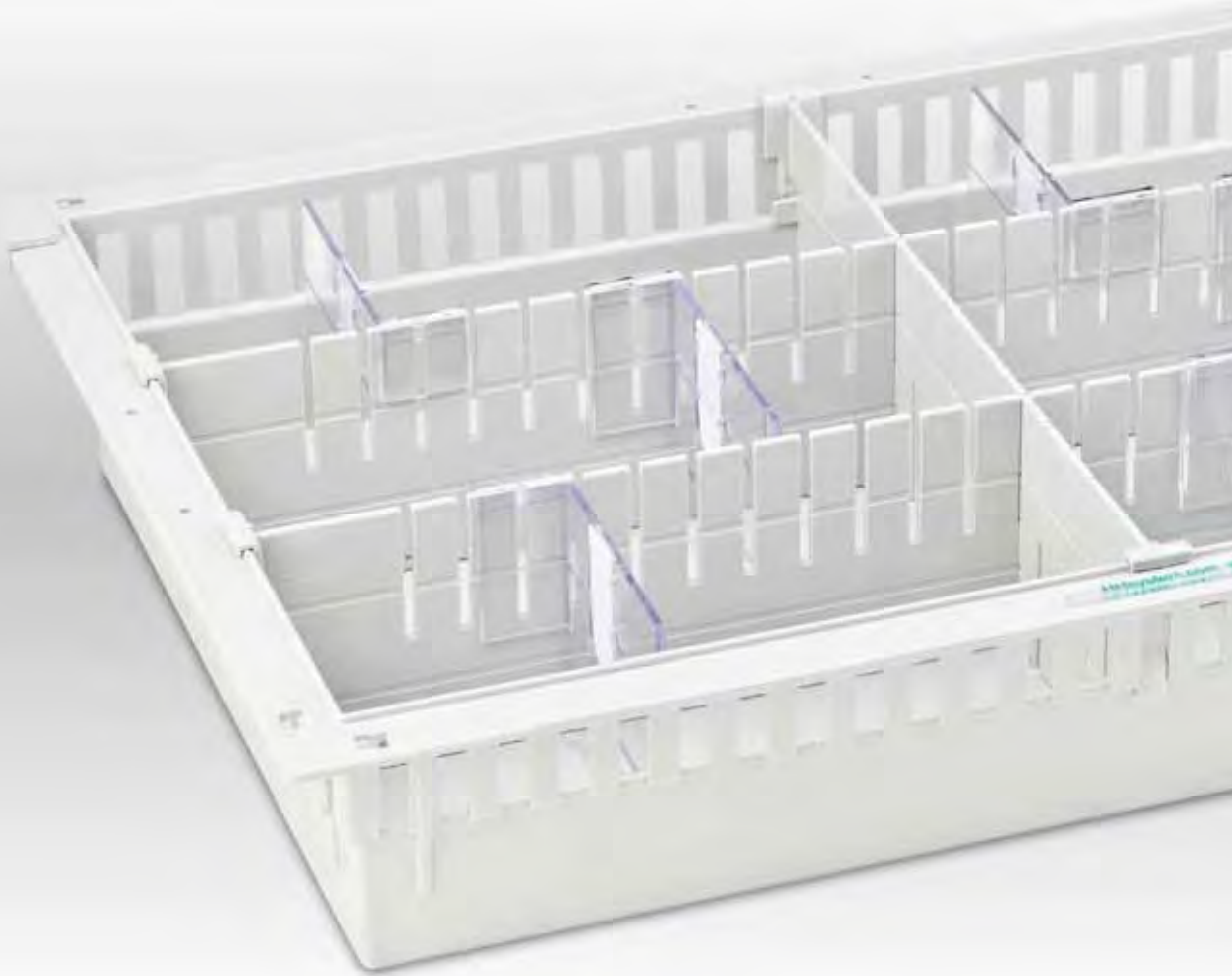


English

**Standardised** but flexible

# **MODULAR TRAY SYSTEMS**

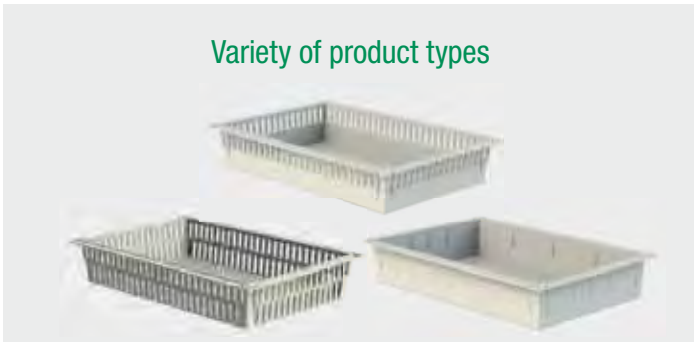
IN ISO AND DIN



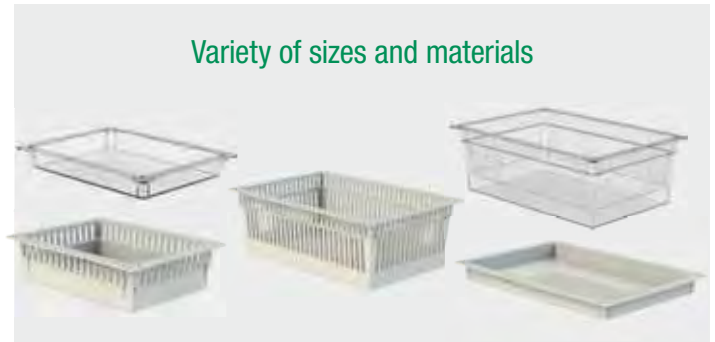
## Why a modular tray system?

The great benefit of this modular tray concept lies in the fact that it may be used both as a storage and logistics system. The modular trays may be freely combined with each other and thus may be used in "Exchange Tray Systems". Other advantages include easy cleaning and sterilisation and easy modular tray partitioning and labelling. Modular tray systems may also be simply and quickly transported to different places of use. The H+H Modular Tray System in ISO and DIN formats can be used in cupboards, trolleys and shelves. It saves space and simplifies logistical processes.

### Variety of product types



### Variety of sizes and materials



### Variety of dividing options



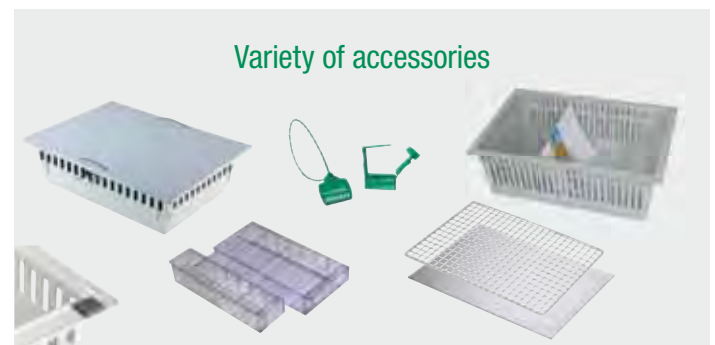
### Variety of labelling options



### Variety of supporting systems



### Variety of accessories



### Variety of applications



# H+H ISO Modular Tray System for greater efficiency

30% space saving through flexible dividing



Storing drugs



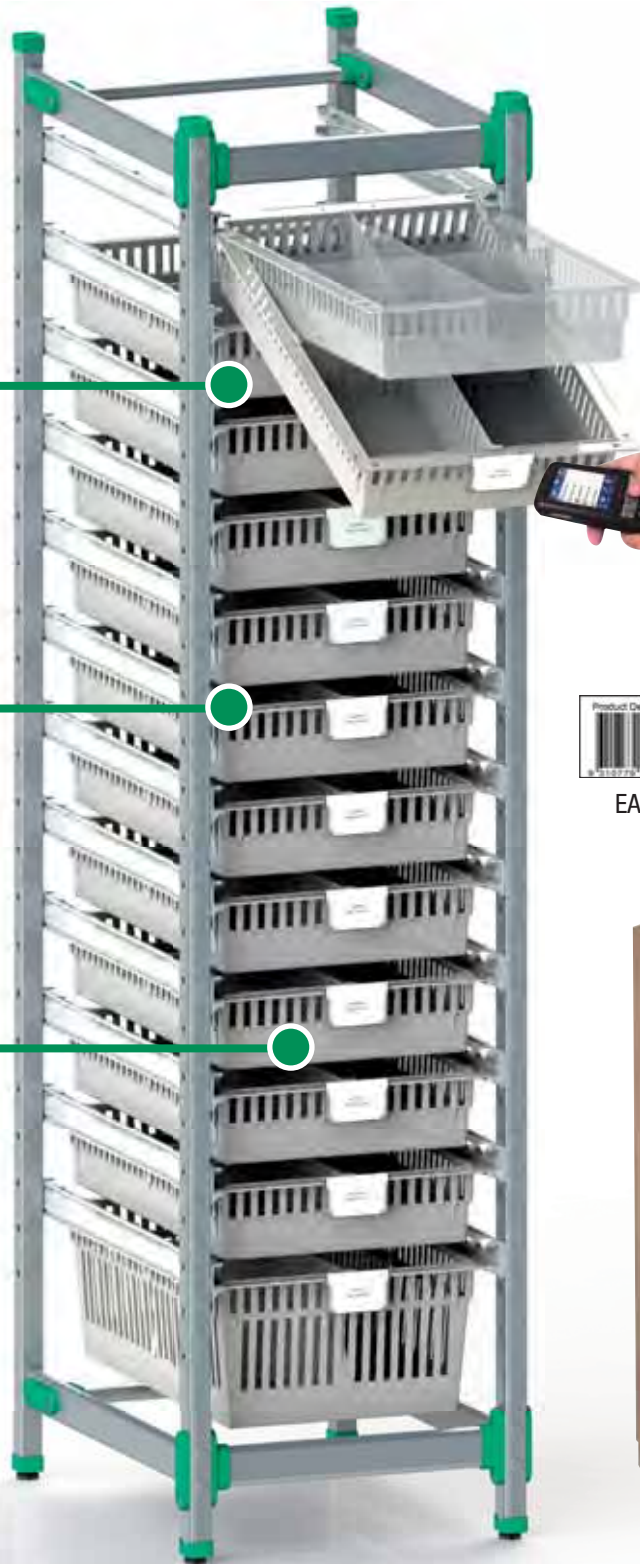
Storing liquids



Storing bandage materials, etc.



Representative photos



Integration of logistic systems

Labels and holders in different sizes, suitable for any existing inventory management system.



EAN



QR



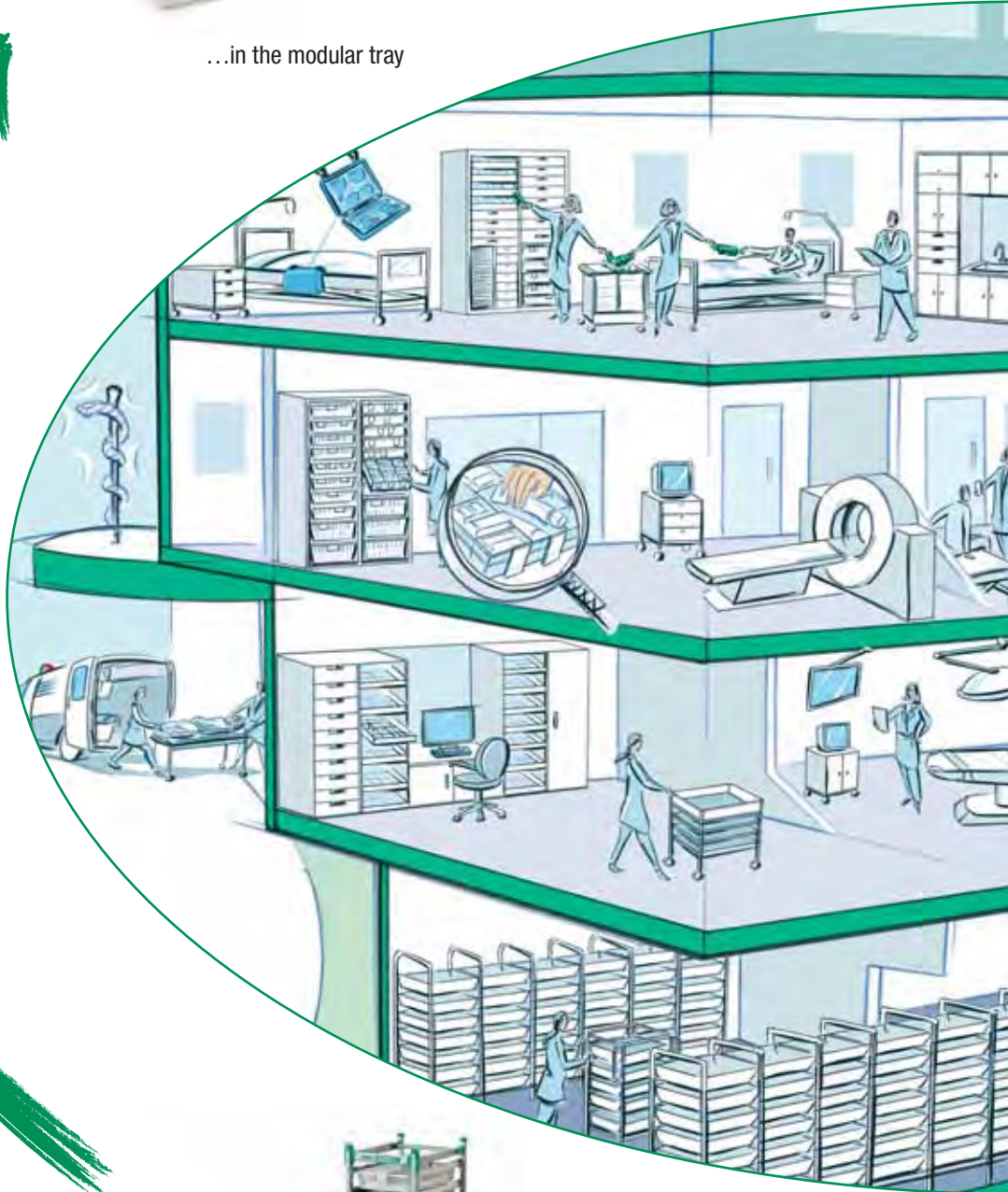
RFID



# H+H ISO Modular Tray



...in the modular tray



Drug storage on station



Delivery to a station

# System in the hospital



Consumption recording



Transmission to the central pharmacy



Central pharmacy

## Side panels

The cost-efficient plastic side panels ensure an increased storage capacity due to small distance between ribs. The modules are inserted into the side panels and the integrated ridge stops the modular trays when pulling out. The mounting of ISO stoppers allows the modular trays to hinge down and prevent them from falling out.

### One side panel with 3 functions



straight (about 5°)

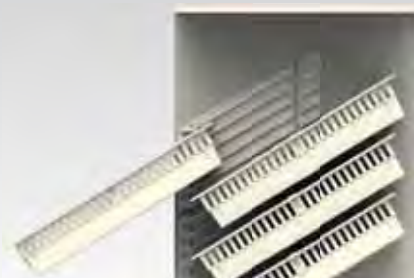


Pass-through feature



hinged (about 30°)

**Inclined side panels** for tall cabinets for easy access to products



## Telescopic runners

Telescopic runners can withstand loads of up to 70 kg. The ball-bearing extensions allow easier extraction of the modular trays without extension loss. The telescopic runners are mainly used in the lower area of the cabinets and shelves to store heavy products such as liquids.

### Different telescopic runner variants



Telescopic runner straight



Pass-through feature



Telescopic runner inclined



There are many ways to equip your telescopic runners.



Catheter holders



Catheter basket frames



Frames for hanging files

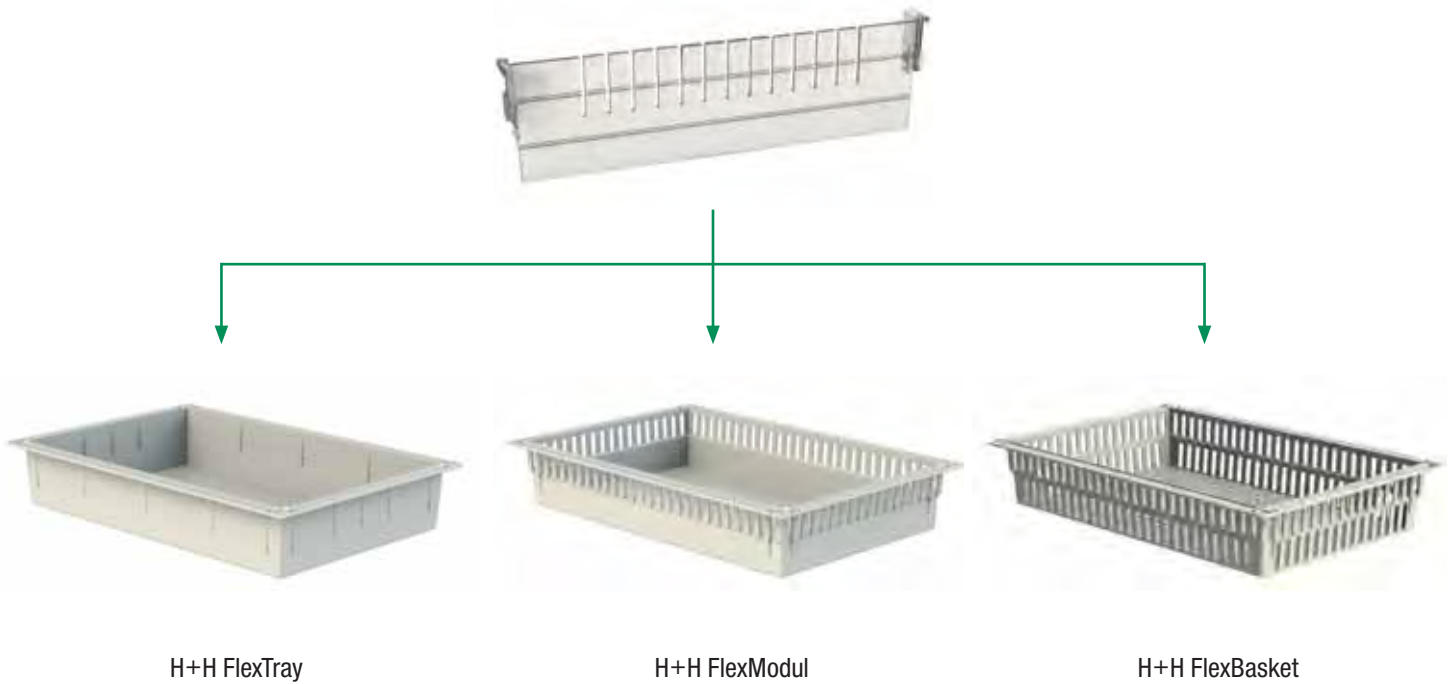


Shelves



Tube holders

## H+H ISO Dividers – to ClipOn



### ClipOn-effect

The strong connection of modular trays and dividers increases stability



Infinite variety of organisation options





## H+H Sliding Dividers – continuously adjustable



Infinite number of configurations for individual storage requirements



Predetermined breaking points for easy length adjustment



30%  
saving

**Integrated labelling**  
Easy integration of Kanban and  
First-In / First-Out processes



The H+H Sliding Dividers offer unlimited dividing options.



# H+H Modular Trays in the ISO Format

## Standardised but flexible

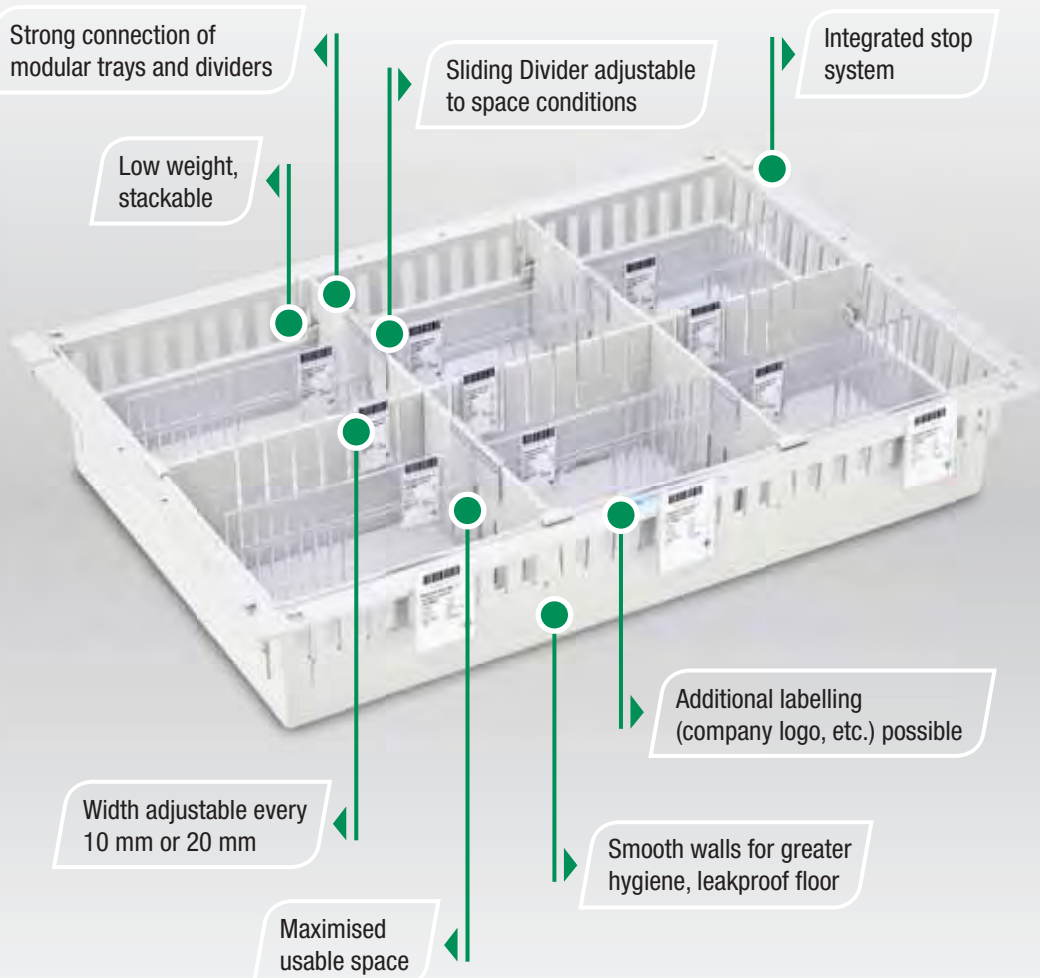
Those who set great store by flexibility, efficiency and quality take advantage of the ISO modular tray system. The product line is the result of intensive development work with the aim of achieving maximum variability during storage. In all three design variants, the floor space has been enlarged and allows for maximised use.

The closed **H+H FlexTray** is completely leak-proof, easy to clean and ensures the best possible hygiene.

The **H+H FlexBasket** offers minimal weight, optimal viewing, ideal ventilation and minimal accumulation of dust particles.

The **H+H FlexModul®**, a hybrid between tray and basket, offers all benefits of both products. This represents a unique opportunity in the market for the storage of medicines and consumer goods.

The main advantage, however, are the dividing options. With one and the same divider system, all three modular units of the same height (FlexTray, FlexBasket and FlexModul) can be equipped in an infinite number of configurations – from rigid to 100% flexible.

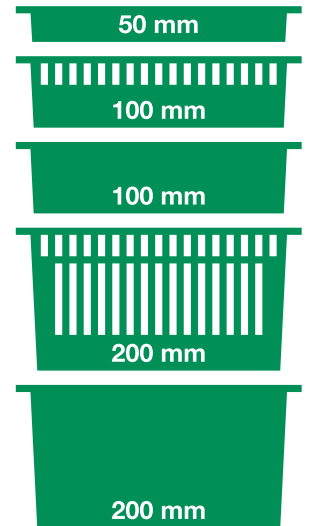


## Quick Info

### MODUL SIZES

- 600 x 400 mm
- 300 x 400 mm

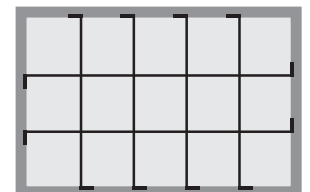
### HEIGHTS AND VARIATIONS



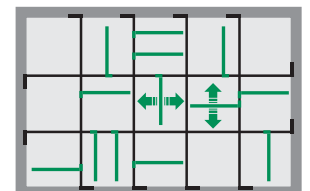
### MATERIALS



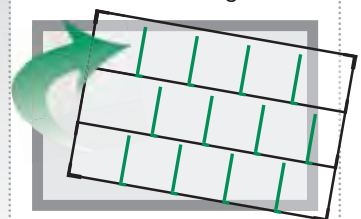
### DIVISIONS



**ridged** with cross-recess divider



**flexible** with sliding divider



**removable** as an insert



FlexTray  
600 x 400 x 50 mm



FlexModul  
600 x 400 x 100 mm



FlexBasket  
600 x 400 x 100 mm



FlexTray  
600 x 400 x 100 mm



FlexModul, FlexBasket  
600 x 400 x 200 mm



FlexTray  
600 x 400 x 200 mm



FlexTray  
300 x 400 x 50 mm



FlexModul  
300 x 400 x 100 mm



FlexModul  
300 x 400 x 200 mm

ABS grey



FlexTray  
600 x 400 x 50 mm



FlexModul  
600 x 400 x 100 mm



FlexBasket  
600 x 400 x 100 mm



FlexModul, FlexBasket  
600 x 400 x 200 mm



FlexTray  
300 x 400 x 50 mm



FlexModul  
300 x 400 x 100 mm



FlexModul  
300 x 400 x 200 mm

PC transparent



Wire basket, coated, white  
600 x 400 x 100 mm



Wire basket, coated, white  
600 x 400 x 180 mm



Wire basket, coated, white  
300 x 400 x 100 mm



Wire basket, coated, white  
300 x 400 x 180 mm



Wire basket, stainless steel  
600 x 400 x 109 mm



Wire basket, stainless steel  
600 x 400 x 185 mm

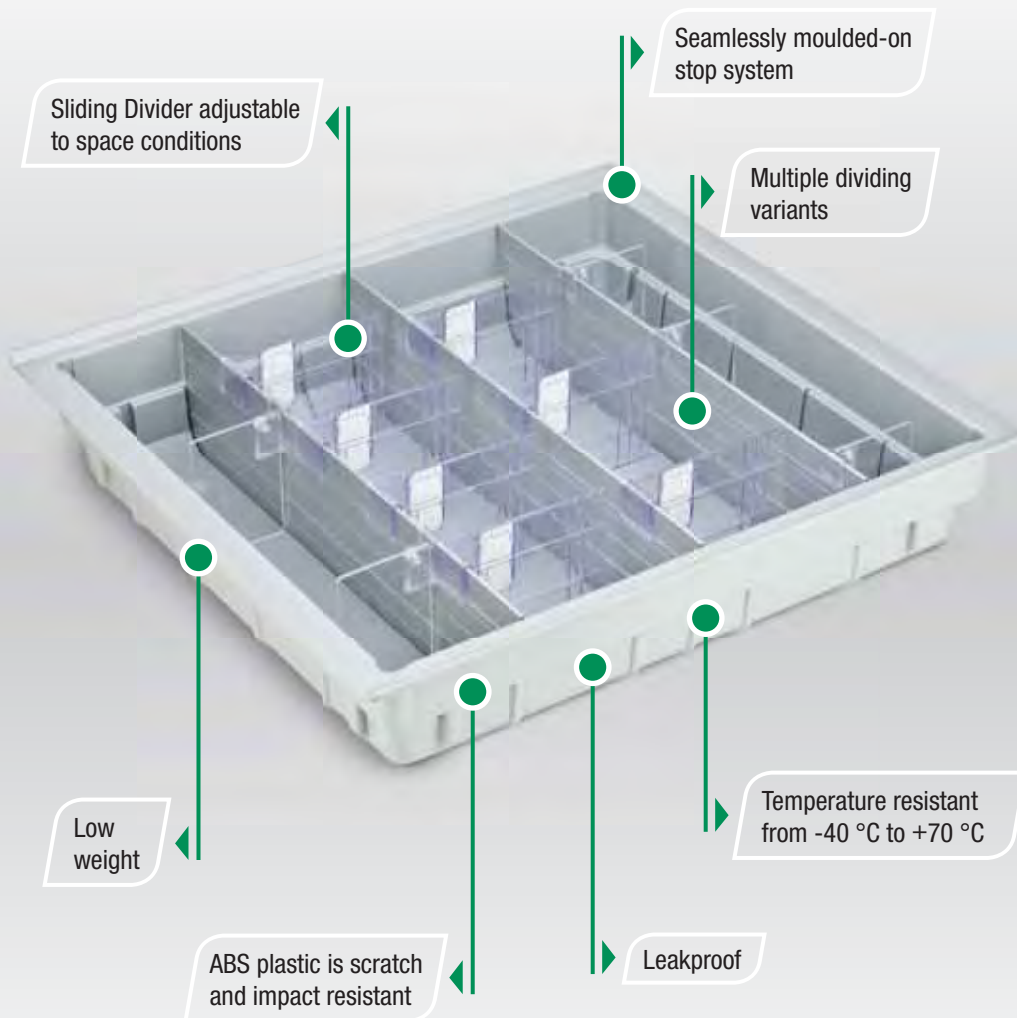
Wire basket

# KLINOTEC the DIN Modular Tray System

DIN standard, but flexible




The brand product Klinotec by H+H SYSTEM offers users a high level of modular flexibility. This high-quality modular tray ensures absolutely clear storage in cabinets with outer cabinet dimensions 600 x 600 mm and greatly simplifies the medical supply chain.

More than 25 years of market presence testifies to their functional superiority in hospitals and practices as well as in the care sector. In combination with H+H Sliding Divider, this creates a perfect organisation system that saves time and significantly reduces the risk of medical errors.

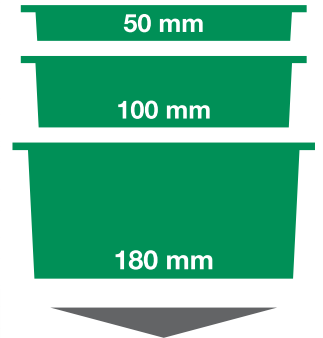


## Quick Info

### MODUL SIZES

-  538 x 500 mm
-  268 x 500 mm
-  538 x 250 mm

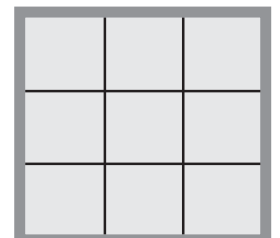
### HEIGHTS



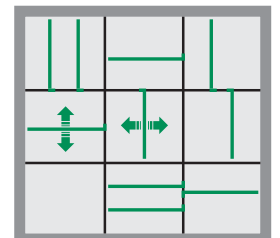
### MATERIALS



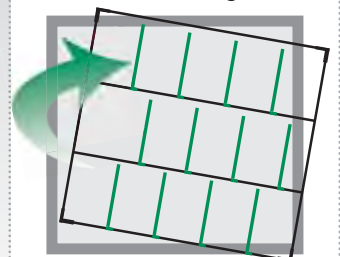
### DIVISIONS



ridged with cross-recess divider



flexible with sliding divider



removable as an insert



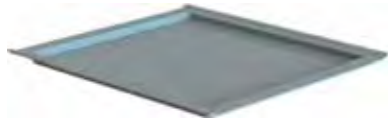
ABS grey  
538 x 500 x 50 mm



ABS grey  
538 x 500 x 100 mm



ABS grey  
538 x 500 x 180 mm



ABS grey  
538 x 500 x 15 mm



ABS grey  
268 x 500 x 50 mm



ABS grey  
268 x 500 x 100 mm



ABS grey  
538 x 250 x 50 mm



ABS grey  
538 x 250 x 100 mm

ABS grey



Acrylic transparent  
538 x 500 x 50 mm



Acrylic transparent  
538 x 500 x 100 mm



Acrylic transparent  
538 x 500 x 15 mm



Acrylic transparent  
268 x 500 x 50 mm



Acrylic transparent  
538 x 250 x 50 mm

Acryl transparent



Wire basket, coated, white  
835 x 500 x 100 mm



Wire basket, coated, white  
538 x 500 x 100 mm



Wire basket, coated, white  
538 x 500 x 180 mm



Wire basket, coated, white  
268 x 500 x 100 mm



Wire basket, coated, white  
268 x 500 x 180 mm



Wire basket, coated, white  
538 x 250 x 100 mm

Wire basket, coated

## Modular Tray accessories

ISO Dividers



Sliding Dividers



Removable Inserts



Pullout stoppers



Card holders



Labels



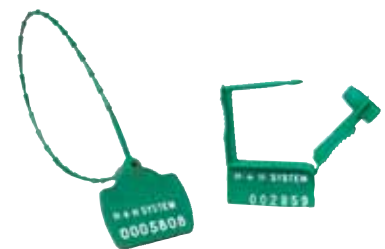
Label bars  
and card holders



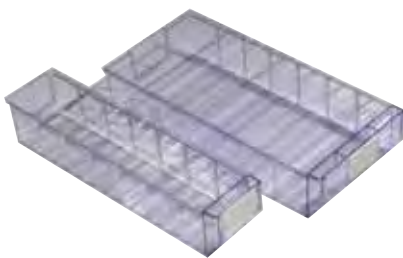
Branding



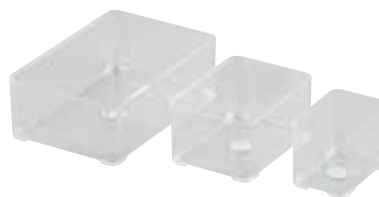
Seals



Storage boxes



Storage bins



Blister storage



Wire basket frames



Catheter basket frames and catheter baskets



Catheter holders



Tube holders



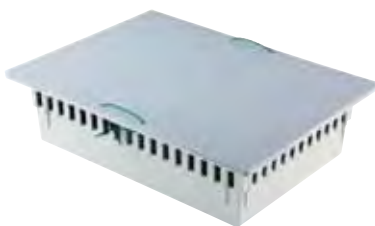
Frames for hanging files



Shelves



Modular tray lids



Worktops and shelves



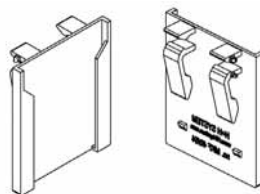
Document holders



Catheter pullouts



Label holders



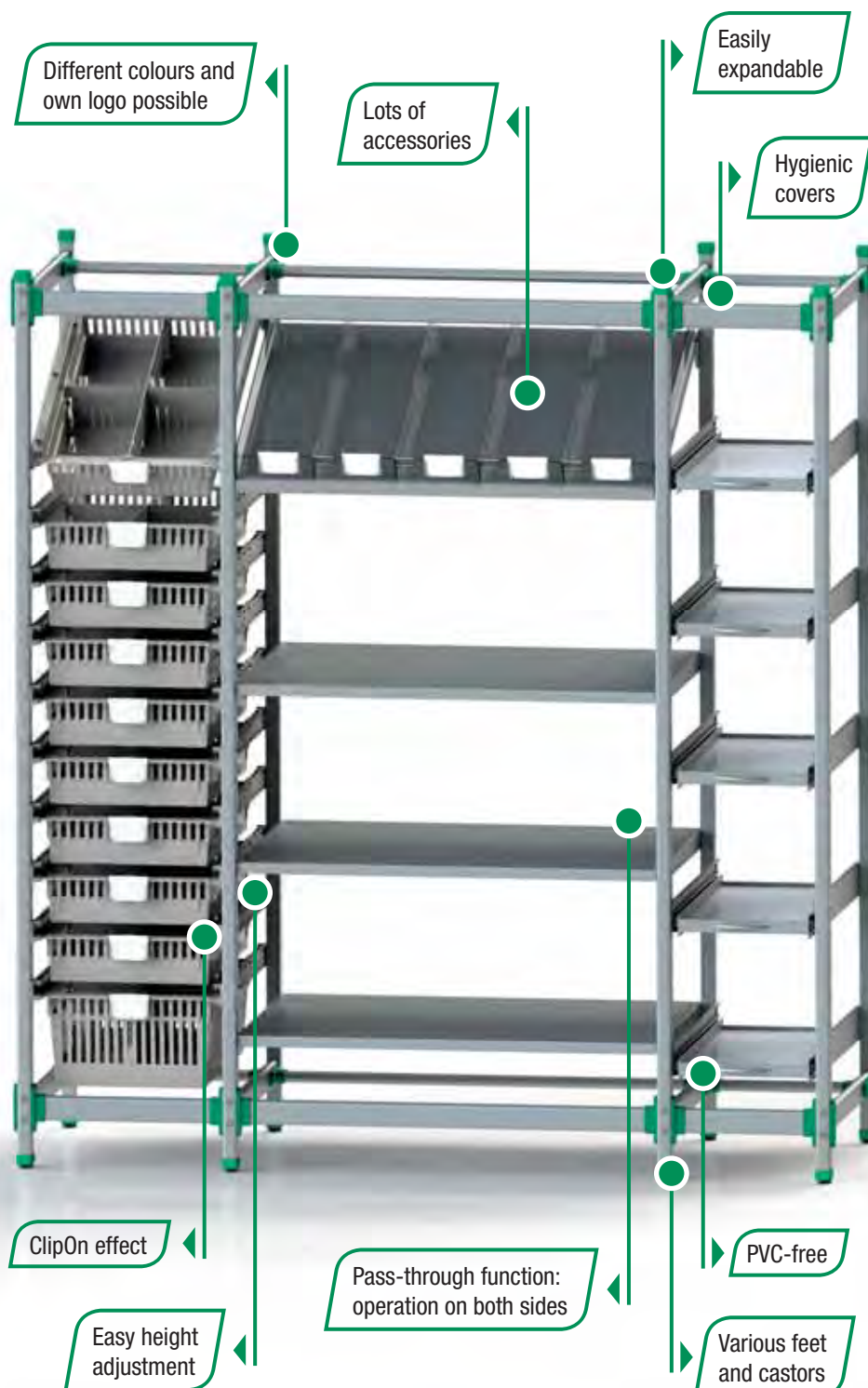
List holders



# H+H FLEXSHELF®

The individual storage system

Using the H+H FlexShelf system, medical supplies can be stored neatly and securely resulting in optimal storage and increased efficiency. This increases the importance of optimum storage and consumption logistics. The new development of H+H SYSTEM made of high-quality aluminium can easily be expanded in different widths and depths for added flexibility. In combination with numerous accessories, such as ISO Modular Trays, shelves, lids, sterilisation and heavy-duty pullouts, the result is not merely a shelf, but also a flexible storage system.



## Quick Info

### SIZES

300 x 600 mm  
400 x 600 mm  
600 x 600 mm  
900 x 600 mm  
300 x 400 mm  
400 x 400 mm  
600 x 400 mm  
900 x 400 mm

Any further size possible

### HEIGHTS

905, 1225, 1545, 1920 mm  
Any other height possible

### MAXIMUM MODULAR TRAY CAPACITY

25 x 50 mm system height  
13 x 100 mm system height  
6 x 200 mm system height

### LOAD CAPACITY

400 kg max. per column

### MATERIALS

High-quality aluminium

### CUSTOMISED

Your colour  
Your logo  
Your size

### SPECIAL FEATURES

Suitable for FIFO, RFID  
and barcode systems



# H+H FLEXSHELF® Accessories

H+H slides  
straight and inclined



Slides with  
ClipOn effect



2in1 function –  
straight and hinged



Telescopic runners  
full/both side extension



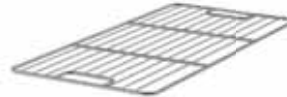
Drawers



Bin organisers



Steri shelves



Handles



Different colours  
and own logo possible



Shelf safety  
wall fixation



Cover caps  
for system holes



Top panels



Shelves  
and worktops



Pullout shelves



Bottle storage



Castors and  
height-adjustable feet



## Modular Tray usage options



## H+H FlexShelf® usage options



# H+H SYSTEM, YOUR PARTNER FOR INDIVIDUAL SOLUTIONS.

## JUST ASK US!

- ! Ready to install drawers
- ! Labels
- ! Cooling of medication
- ! Medication distribution systems
- ! **Modular Tray System (DIN, ISO)**
- ! Organisation
- ! Price labelling
- ! Block of drawers
- ! Tea packaging
- ! Dividers for shelves
- ! Dividers for drawers
- ! Product presentation/displays



Headquarters Austria/Europe

**H+H SYSTEM GmbH**  
A-5350 Strobl / Wolfgangsee  
Weissenbach 325  
Tel.: +43 6137 21793-0  
Fax: +43 6137 21793-14  
info@HHsystem.com  
www.HHsystem.com  
www.isomodulsystem.com

Headquarters USA

**H+H SYSTEM, Inc.**  
760 Beechnut Drive  
Pittsburgh, PA 15205  
Phone 412-922-4437 • 800-477-2123  
Fax 412-922-4362 • 800-477-9364  
infousa@hhsystem.com  
www.hhsystem.com  
www.isomodulsystem.com

